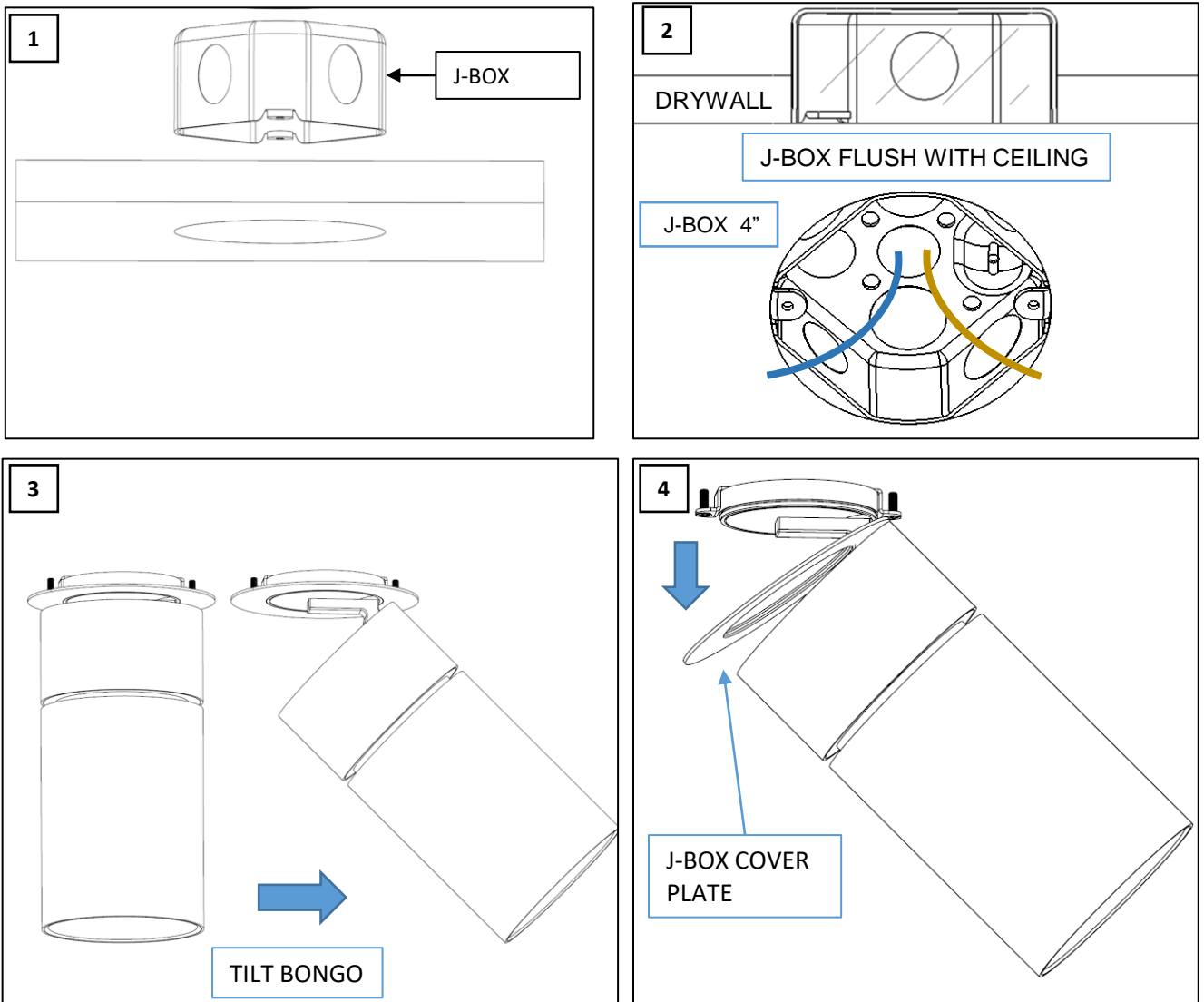


BONGO J “INTEGRATED DRIVER” INSTALLATION INSTRUCTIONS



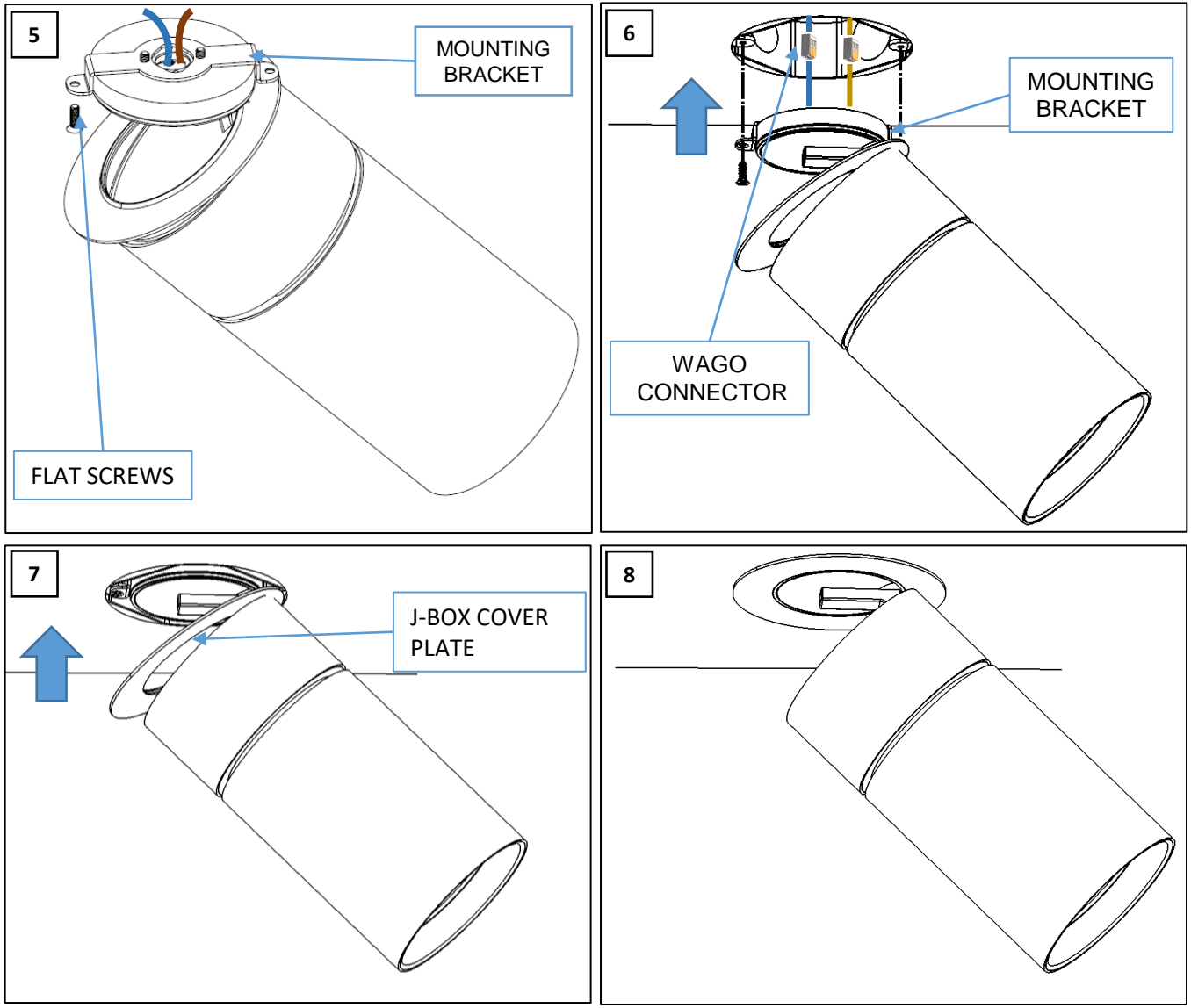
WARNING - RISK OF FIRE AND ELECTRICAL SHOCK. FIXTURE MUST BE INSTALLED BY A QUALIFIED ELECTRICIAN ONLY. FIXTURE IS INTENDED FOR INSTALLATION IN ACCORDANCE WITH THE NATIONAL ELECTRICAL CODE, LOCAL AND FEDERAL SPECIFICATIONS. DISCONNECT POWER AT ELECTRICAL PANEL BEFORE SERVICING. RETAIN THESE INSTRUCTIONS FOR MAINTENANCE REFERENCE.

FIXTURE INSTALLATION



1. J-BOX SHOULD BE PRE-INSTALLED BEFORE INSTALLING THE FIXTURE. MAKE SURE J-BOX IS FLUSH WITH THE DRYWALL. (FIGURE 1 & 2)
2. PULL POWER LINES THROUGH THE J-BOX. (FIGURE 2)
3. TILT THE BONGO FIXTURE ROTATING MAX 90°. (FIGURE 3)
4. PULL OUT THE J-BOX COVER PLATE AND LEAVE ON TOP OF THE HINGE/BRACKET. (FIGURE 4)

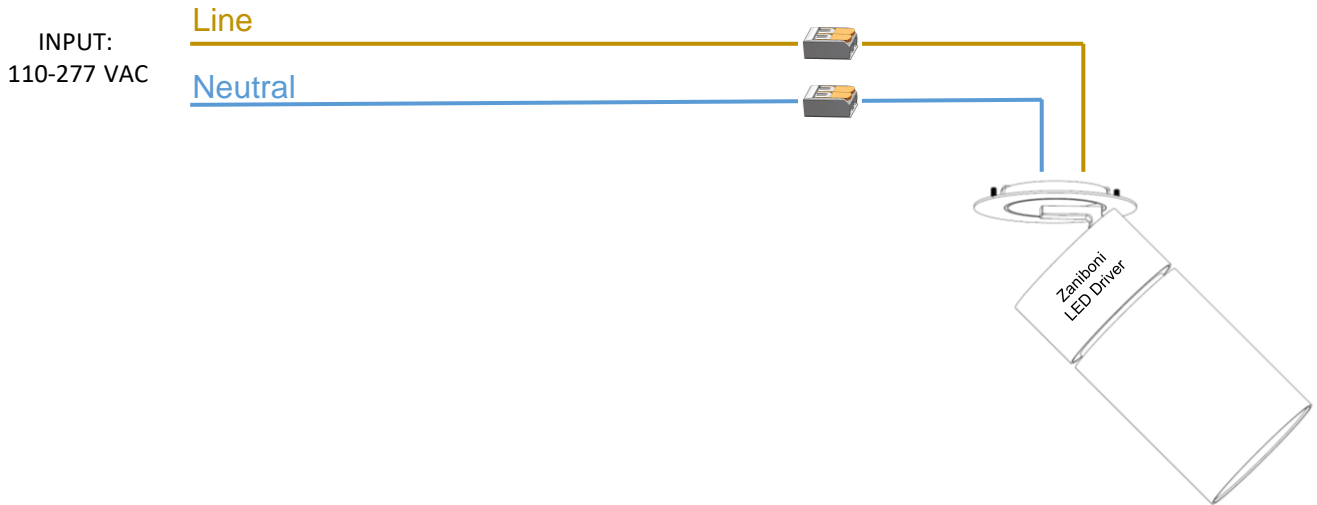
FIXTURE INSTALLATION



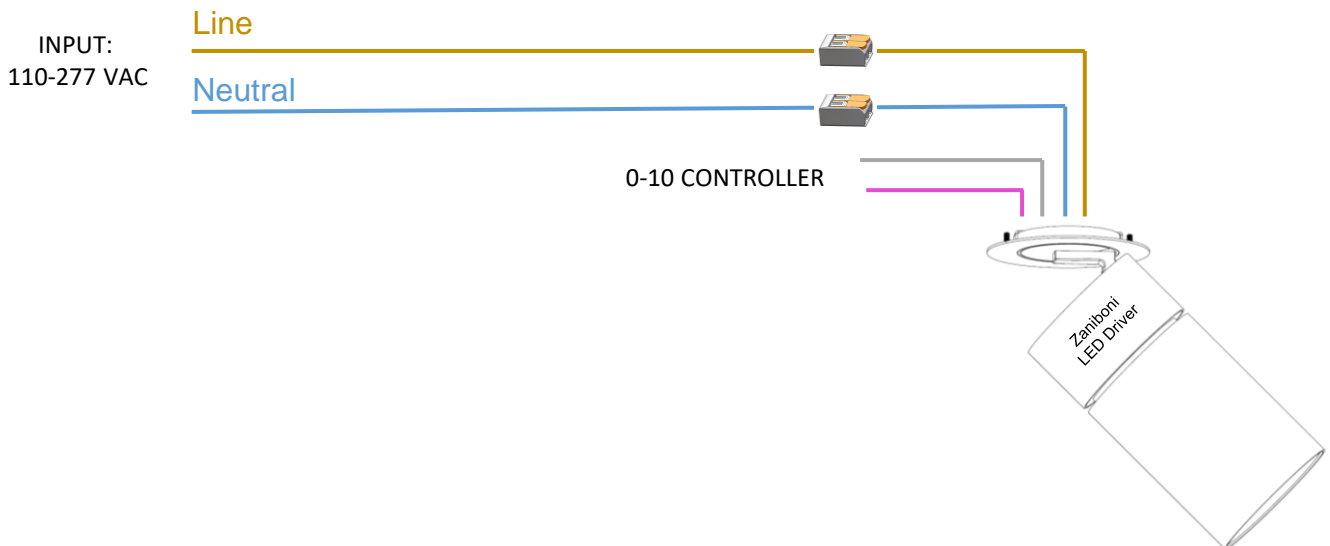
5. UNSCREW THE TWO FLAT SCREWS IN THE MOUNTING BRACKET. (FIGURE 5)
6. CONNECT FIXTURE TO LINE VOLTAGE USING PROVIDED WAGO CONNECTORS. CONNECT NEUTRAL TO BLUE/WHITE AND HOT TO BROWN/BLACK. B(FIGURE 6)
7. ALIGN THE HOLES OF THE MOUNTING BRACKET TO THE HOLES OF J-BOX. ATTACH THE FIXTURE TO THE J-BOX USING THE TWO FLAT HEAD SCREW (#8-32 x0.5" LONG) PROVIDED BY ZANIBONI LIGHTING. MAKE SURE ALL WIRES ARE UP IN THE J-BOX. (FIGURE 7)
8. PUSH THE J-BOX COVER PLATE ON THE FIXED SIDE THAT IS INSTALLED ON J-BOX. (FIGURE 7)
9. ORIENT THE FIXTURE. PROCEED TO SWITCH POWER ON. (FIGURE8)

WIRING DIAGRAM – LINE VOLTAGE

- **ELV, NON-DIM, BLUETOOTH INTEGRATED DRIVER**



- **0-10V INTEGRATED DRIVER**



**The manufacturer reserves the right to change or modify the design, dimensions and specifications at anytime without notice. The manufacturer accepts no liability for consequential damage which is occasioned to the user base on the data provided.*